

The 15th Japanese Sake Tourney

Theme: H#2, Face-to-Face and/or Back-to-Back, with neutral pieces.

Any other fairy pieces and/or conditions are not allowed.

Only computer-tested problems will be accepted. Popeye 4.69 is needed for testing.

Judges: Tadashi Wakashima, Toshiki Kobayashi, Masato Yoshii

Closing Date: 5th of August (Wednesday), 10 p.m.

E-mail entries should be sent to Tadashi Wakashima (tadashi@hcn.zaq.ne.jp) before 30th of July (Thursday).

Prizes: Bottles of Sake.

The tourney is open to everybody, but only congress participants can receive bottles.

Definition

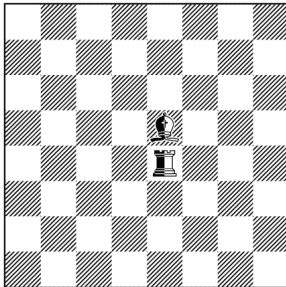
Face-to-Face: The theme of the 13th Sake. See below.

<http://www.wfcc.ch/wp-content/uploads/2013/10/2013-Batumi-bulletin.pdf>

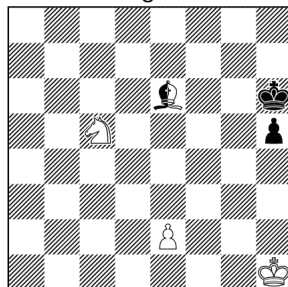
Back-to-Back: The theme of the 14th Sake. See below.

http://www.kunstschach.ch/wccc2014/docs/WCCC2014_Berne_Booklet.pdf

Scheme



Example Shinichi Soma Original



H#2

(3+2+1)

- a) FaceToFace
- b) BackToBack

[FaceToFace]

White can move both neutrals as nB.

Black can move both neutrals as nR.

[BackToBack]

White can move both neutrals as nR.

Black can move both neutrals as nB.

a) 1.nBf5 Se6 2.nBe4+ e3#

b) 1.nBc4 Sf8 2.nBe6 Sh7#