

3rd Azemmour theme Ostroda 2015



Definition:

In a first phase of a 2,5-3 helpmate, a white figure A, which makes the white first move, must mate in the second phase. Furthermore, in the second phase, a white figure B, which makes the first move, will mate in the first phase. The idea can be showed in a cyclic form.

Conditions:

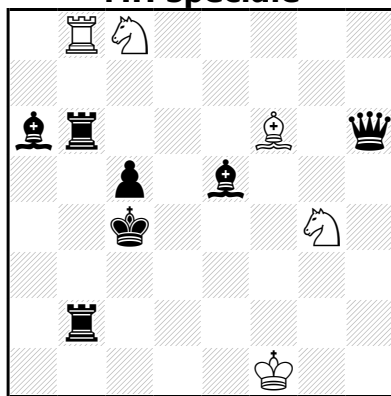
- 1) the A and B figures must play on different squares in the two phases. (No exchange of white moves)
- 2) A and B figures cannot be captured (No Zilahi).
- 3) A and B figures must not play the second white moves (other white figures should participate in the second moves).

Closing date : 05/08/2015

Sent : azonkoud@hotmail.com

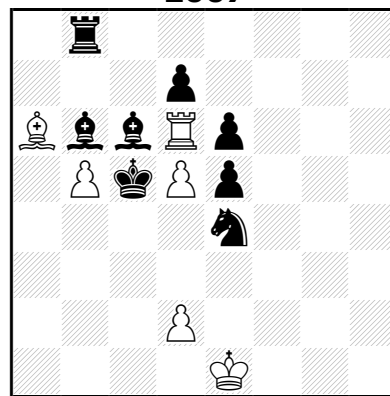
Examples:

I- Abdelaziz ONKOUD idee & form 2012 MH spéciale



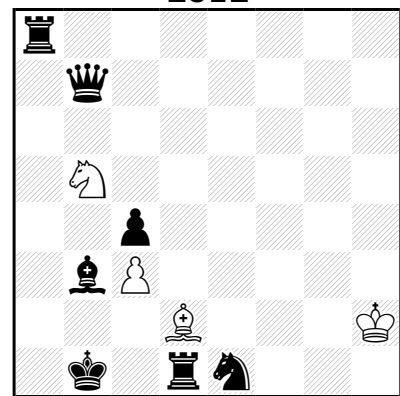
h#2,5 2 solutions 5+7

II- Abdelaziz ONKOUD Suomen Tehtävänäikat 2007



h#2,5 b) ♖d2→a3 6+8

III- Abdelaziz ONKOUD Suomen Tehtävänäikat 2012



h#3 2 solutions 4+7

- I-1... ♖f2 5 (A) 2. ♜é6 ♜×b2 3. ♙d6 ♖b6♯ (B)
 1... ♖é7 (B) 2. ♙ç7 ♙×b2 3. ♜d6 ♖é5♯ (A)
 II-a) 1... ♖b×ç6 (A) 2. ♙d4 ♙d3 3. ♙ç5 ♖×é6♯ (B)
 b) 1... ♖d×ç6 (B) 2. ♙ç4 ♜d3 3. ♙ç5 ♖b6♯ (A)
 III-1. ♜a1 ♙ç1 (A) 2. ♜d4 ♖×d4 3. ♙a2 ♖ç3♯ (B)
 1. ♙a1 ♖a3 (B) 2. ♙b4 ♖×b4 3. ♙a2 ♙ç3♯ (A)