

Champagne Tourney Ostrada 2015

The Tourney is opened only to Congress Participants

The Tourney is declined in 2 sections (with separate awards) :

A . ProofGames B. Any other kind of Retro problems

Theme : **Hesitation**

a piece can (retro)-move to a certain square in one move
it first moves to another square before moving to this square

Example for Section A :

Gerd WILTS

Retro mailing list 1997



SPG 4,0 2 solutions (16+16) C+

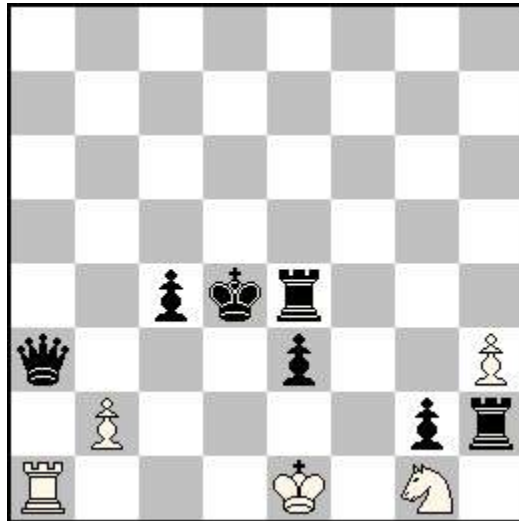
1.**b3** e5 2.Ba3 Be7 3.Bd6 Bg5 4.**b4** Be3

1.b4 **e6** 2.Bb2 Bc5 3.Be5 Be3 4.Bd6 **e5**

Hesitating Pawns

Example for Section B :

Fadil ABDURAHMANOVIC
Special HM Orbit 2011-II



h#2*

(5+7)

1...h4 2.Kd3 0-0-0‡

With Black on move,
last white move is by wK or wRa1, so 0-0-0 is illegal

1.**Qb3** Ra5 2.**Qd3** Sf3‡

Hesitating Queen

Fairy conditions allowed in both sections.

Maximum 3 entries per composer per section.

Maximum 1 non computer tested entry per composer in section A

Entries to Michel Caillaud by Wednesday 5th August 9:00 PM